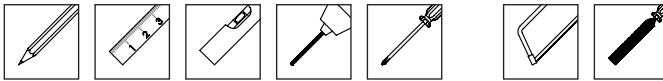


Plastic Curtain Track

Fitting Instructions

Please keep for future reference

Tools required



Please read these instructions carefully and check the contents of the pack before attempting to assemble and fix this product.

Pack Contents

	Track	Bracket Back Plate	Bracket Facing Plate	End Stop & Screw	Glider
Length					
100cm	1	4	4	2	12
125cm	1	5	5	2	16
150cm	1	6	6	2	18
175cm	1	7	7	2	24
200cm	1	8	8	2	26
250cm	1	10	10	2	32
275cm	1	12	12	2	34
300cm	1	12	12	2	38
350cm	1	14	14	2	44
500cm	1	22	22	6	66

Should any component be missing, please call the Customer Care Department on **0330 005 2233**

Safety Recommendation

Only use a Step Ladder to install this product.

DO NOT over reach. Always move the Step Ladder so that you are in a safe working position.

DO NOT hold or lean on the track to support your weight.

We recommend you use two people for installation of long length of track.

Take care when using power tools, use of a Residual Current Device (RCD) is recommended.

Always use eye protection when drilling. Beware of hidden pipe runs and cables.

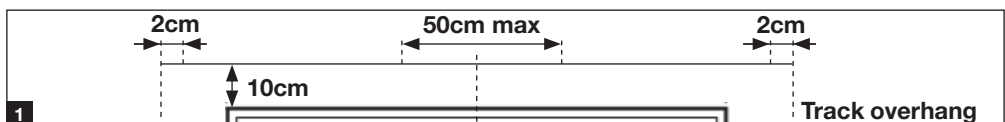
No liability will be accepted for damage or injury caused by incorrectly installed or assembled product.

PLEASE KEEP OUT OF THE REACH OF YOUNG CHILDREN. SMALL PARTS - CHOKING HAZARD

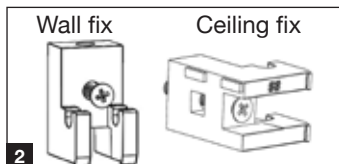
PLEASE KEEP INSTRUCTIONS AND BATCH CODE ON THE PACKAGING FOR FUTURE REFERENCE IN CASE OF ANY QUERIES

Installation and assembly

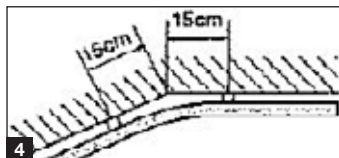
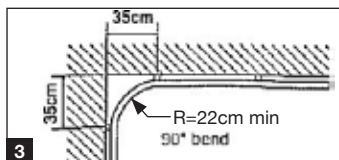
The curtain track can be fitted within a window recess or outside of the window. All the brackets should be 10cm above the window frame if possible. Ensure that the track centre is aligned to the centre of the window and that the track overhang is long enough to dress the curtains. Mark the position of the bracket backplate 2cm from each end of the track. Evenly distribute the remaining brackets no more than 50cm apart as shown in Fig 1.



Fix all the bracket back plates as shown in Fig 2.



The track can also be bent to suit bay windows with 90° or shallow bends, the brackets should be located as illustrated in Fig 3 & Fig 4. The radius of the 90° bend should be at least 22cm. The track may kink and distort if the radius is less than 22cm.

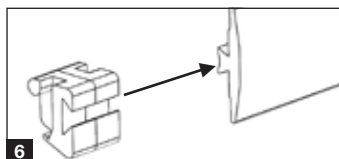


Cutting the rail

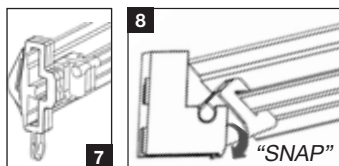
Measure and mark the required length of track. Using a hacksaw or mitre saw carefully cut to length ensuring a straight edge remains (Fig 5). Remove all burrs using a file.



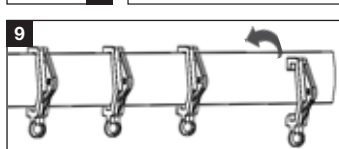
Slide the bracket facing plates (Fig 6) onto the V section of the rail to match the quantity and position of the back plates.



Install the end stops next to the end brackets and screw in place on both ends as shown in Fig 7.



Simply locate the bracket facing plates onto the bracket back plates and snap down to secure (Fig 8) starting at the centre, working outwards each side of the track.



Glide hooks

Insert the glide hooks into the curtain tape at evenly spaced intervals. Clip the glide hooks onto the track by putting the bottom of the hook onto the track and snapping over the top (Fig 9).



When using special pleat hooks or standard curtain hooks these should be placed into the eye of the glide hooks.

The smooth running properties will benefit from an occasional wipe with silicone furniture polish.